



## PRODUCT GUIDE





# Amerimix<sup>®</sup>

## PREBLENDED MORTARS



### AmeriMix Preblended Mortar

The choice is **CLEAR:**

**C**onsistency

**L**abor reduction

**E**nhanced productivity

**A**STM - pretested to ASTM specifications

**R**educe waste and risk to the contractor



Amerimix mortars are engineered for load or non-load bearing construction and designed and tested to meet the proportioning and property specifications of ASTM C 270 Standard Specification for Mortar for Unit Masonry for portland/lime based mortars and ASTM C 91 Standard Specification for Masonry Cement. Amerimix mortars also meet the requirements of ASTM C 1714 Standard Specification for Preblended Dry Mortar Mix for Unit Masonry when preblended mortar is required to meet specifications, in lieu of job-site mixed mortars. Amerimix mortars are available in Type N, S and M, as well as specialized mortar mixes for applications that need water repellency or higher bond strengths where seismic activity is problematic, or mortars for historical restorations. All Amerimix preblended mortars can be custom colored to meet any design need for your next project.

### Features & Benefits

- Factory blended to ensure consistency and quality
- Provides greater yields, reduced labor costs and reduced jobsite trash as compared to field mixes
- Available in 80 lb bags, or 3,000 lb bulk bags for use with Amerimix silo delivery systems
- Custom colors to match, homogenize or contrast brick, block or stone
- Contribute to LEED points



## Portland, Lime & Sand Mortar - AMX 400 Series

The AMX 400 Series is a factory blend of portland cement, hydrated lime and dried sand. The AMX 400 Series is specially formulated to provide high water retention, exceptional workability and superior bond strength. Available in types N, S and M.

### Features

- Reduced labor costs and jobsite trash
- High bond strength
- Excellent workability
- Extended board life for less retempering in hot and windy climates

### Uses

- Exterior or interior
- Above or below grade  
(Type N for above grade only)
- Load bearing or non-load bearing construction
- Laying or resetting brick, block or stone

### Specifications

- ASTM C 150 Standard Specification for Portland Cement
- ASTM C 207 Standard Specification for Hydrated Lime for Masonry Purposes
- ASTM C 270 Standard Specification for Mortar for Unit Masonry
- ASTM C 1714 Standard Specification for Preblended Dry Mortar Mix for Unit Masonry
- ACI 530.1 Specification for Masonry Structures



## Masonry Cement & Sand Mortar - AMX 500 Series

The AMX 500 Series is a factory blend of masonry cement and dried sand. The AMX 500 Series is specially formulated to provide high water retention, exceptional workability and superior bond. Available in Types N, S and M.

### Features

- Reduced labor costs and jobsite trash
- High bond strength
- Excellent workability
- Extended board life for less retempering in hot and windy climates

### Uses

- Exterior or interior
- Above or below grade  
(Type N for above grade only)
- Load bearing or non-load bearing construction
- Laying or resetting brick, block or stone

### Specifications

- ASTM 91 Standard Specification for Masonry Cement
- ASTM C 150 Standard Specification for Portland Cement
- ASTM C 270 Standard Specification for Mortar for Unit Masonry
- ASTM C 1714 Standard Specification for Preblended Dry Mortar Mix for Unit Masonry
- ACI 530.1 Specification for Masonry Structures



## Colored Mortar - AMX 405 & AMX 505

AMX 405 Colored Portland Cement and Lime Mortar and AMX 505 Colored Masonry Cement Mortar are factory blended with high quality iron oxide pigments that meet ASTM C 979 Standard Specifications for Pigments in Integrally Colored Concrete. These mortars offer long lasting color that integrate throughout the depth of the mortar joint. They are available in standard colors or custom colors to match your design team's creativity. Available in types N, S and M.

### Features

- Custom formulated to match, compliment or contrast brick, block or stone
- Factory blended under controlled conditions for proper proportions and mix consistency
- High bond strength

### Uses

- Interior or exterior applications
- Above and below grade  
(Type N for above grade use only)
- Laying or resetting brick, block and stone

### Specifications

- ASTM 91 Standard Specification for Masonry Cement
- ASTM C 150 Standard Specification for Portland Cement
- ASTM C 207 Standard Specification for Hydrated Lime for Masonry Purposes
- ASTM C 270 Standard Specification for Mortar for Unit Masonry
- ASTM C 1714 Standard Specification for Preblended Dry Mortar Mix for Unit Masonry
- ACI 530.1 Specification for Masonry Structures



## Water Repellent Mortars with RainBloc GP® - AMX 410 WRM & 510 WRM

Amerimix WRM with RainBloc GP is part of the total RainBloc® system. When used with concrete masonry units that contain RainBloc, it creates a wall system that has been proven in both the lab and on jobsites to inhibit water penetration, creating a superior moisture barrier. RainBloc GP is the only patented, mortar admixture that is traceable, detectable and measurable in hardened mortar. Available in portland cement and lime (AMX 410) & masonry cement (AMX 510).

### Features

- RainBloc GP is proportioned correctly in every batch for maximum performance
- Exceeds water repellency requirements of the "Upload Test" specified in ASTM C 1384
- When used in conjunction with concrete masonry units manufactured with RainBloc, the National Concrete Masonry Association Rated this wall assembly "E" for excellent using ASTM E 514

### Uses

- When a water repellent mortar is required in conjunction with water repellent masonry units
- Interior or exterior applications
- Above or below grade
- Laying or resetting brick, block and stone

### Specifications

- ASTM 91 Standard Specification for Masonry Cement
- ASTM C 150 Standard Specification for Portland Cement
- ASTM C 207 Standard Specification for Hydrated Lime for Masonry Purposes
- ASTM C 270 Standard Specification for Mortar for Unit Masonry
- ASTM C 1384 Standard Specification for Admixtures for Masonry Mortars
- ASTM C 1714 Standard Specification for Preblended Dry Mortar Mix for Unit Masonry
- ACI 530.1 Specification for Masonry Structures



## Water Repellent Mortars - AMX 410 WRM & AMX 510 WRM

This formulation is designed for applications where a water repellent mortar is required in combination with water repellent masonry units. The water repellent is factory blended in exact proportions to ensure maximum water resistance. Available in portland cement and lime (AMX WRM 410) and masonry cement (AMX WRM 510).

### Features

- Repellent agent is proportioned correctly in every batch
- Eliminates field addition of water repellent

### Uses

- Where water repellent mortar is required in conjunction with water repellent masonry units

### Specifications

- ASTM 91 Standard Specification for Masonry Cement
- ASTM C 150 Standard Specification for Portland Cement
- ASTM C 207 Standard Specification for Hydrated Lime for Masonry Purposes
- ASTM C 270 Standard Specification for Mortar for Unit Masonry
- ASTM C 1384 Standard Specification for Admixtures for Masonry Mortars
- ASTM C 1714 Standard Specification for Preblended Dry Mortar Mix for Unit Masonry
- ACI 530.1 Specification for Masonry Structures



## Stone Veneer Mortar - AMX 470

A high performance mortar designed to set and grout artificial stone on horizontal or vertical concrete or concrete masonry substrates.

### Features

- Good bond and sheer resistance
- Increased yield compared to typical field mix mortars
- Available in gray and buff and can be custom colored to meet your needs

### Uses

- Interior or exterior applications
- Above and below grade
- Bonding of artificial veneer brick or stone
- For bedding, setting and grouting
- For all masonry veneer work

### Specifications

- ASTM 91 Standard Specification for Masonry Cement
- ASTM C 150 Standard Specification for Portland Cement
- ASTM C 270 Standard Specification for Mortar for Unit Masonry
- ASTM C 1438 Standard Specification for Latex and Powder Polymer Modifiers for Use in Hydraulic Cement and Concrete Mortar
- ASTM C 1714 Standard Specification for Preblended Dry Mortar Mix for Unit Masonry



## Polymer Modified Stone Veneer Mortar - AMX 475 PSV

A high performance, polymer modified mortar designed with superior bond strength and ability to grout artificial stone on horizontal and vertical surfaces to concrete or masonry substrates.

### Features

- Added polymers enhance the bond between veneer and substrate
- Superior bond strength
- Good bond and sheer resistance
- Available in gray or buff and can be custom colored to meet your needs

### Uses

- Interior or exterior applications
- Above and below grade
- Bonding of artificial veneer brick or stone
- For all masonry veneer work

### Specifications

- ASTM 91 Standard Specification for Masonry Cement
- ASTM C 150 Standard Specification for Portland Cement
- ASTM C 207 Standard Specification for Hydrated Lime for Masonry Purposes
- ASTM C 270 Standard Specification for Mortar for Unit Masonry
- ASTM C 1438 Standard Specification for Latex and Powder Polymer Modifiers for Use in Hydraulic Cement and Concrete Mortar
- ASTM C 1714 Standard Specification for Preblended Dry Mortar Mix for Unit Masonry



## Tuck Pointing Mortar - AMX 420

A factory blend formulation engineered to repair and restore masonry structures where a low strength, Type O mortar is required.

### Features

- High bond strength for lasting finish
- Can be custom pigmented to meet your needs

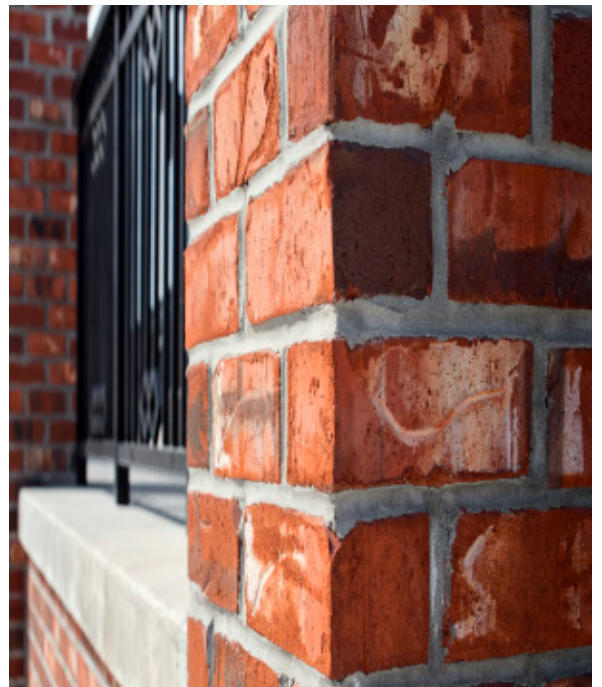
### Uses

- Pointing mortar joints
- Restoring masonry construction
- For nonstructural repairs

### Specifications

- ASTM 91 Standard Specification for Masonry Cement
- ASTM C 150 Standard Specification for Portland Cement
- ASTM C 207 Standard Specification for Hydrated Lime for Masonry Purposes
- ASTM C 1714 Standard Specification for Preblended Dry Mortar Mix for Unit Masonry







# Amerimix<sup>®</sup>

## PREBLENDED GROUTS



### Amerimix Preblended Grouts

The choice is **CLEAR**:

**C**onsistency

**L**abor reduction

**E**nhanced productivity

**ASTM** - pretested to ASTM specifications

**R**educe waste and risk to the contractor

---

Recommended for load-bearing masonry construction, Amerimix Core Fill Grout is used for filling masonry blocks and providing vertical and horizontal reinforcing.

### Features & Benefits

- Available in varying compressive strengths
- Available in coarse or fine aggregate
- Available in 80 lb bags, or 3,000 lb bulk bags for use with the Amerimix silo delivery systems
- Excellent flow to minimize consolidation





## Core Fill Grout - AMX 600 Series

AMX 600 CG – Coarse Grout and AMX 600 FG – Fine Grout are factory blends of cementitious materials and dried aggregates. As a fluid cementitious material, these grouts are formulated for superior flow to fill masonry voids, to bond together adjacent masonry units and steel reinforcement in the cores of the masonry units and to bond beams and lintels to the masonry assembly.

### Features

- Improves jobsite productivity by providing engineered product when and where it's needed
- Less waste, makes only the amount of grout needed for the application
- Superior flow
- Reduced segregation
- Pumpable
- Available in various compressive strengths

### Uses

- Load bearing masonry construction
- Vertical and horizontal reinforcing
- Bond beams

### Specifications

- ASTM C 150 Standard Specification for Portland Cement
- ASTM C 1714 Standard Specification for Preblended Dry Mortar Mix for Unit Masonry
- ACI 530.1 Specification for Masonry Structures

# Amerimix<sup>®</sup>

## PREBLENDED STUCCOS



### AmeriMix Preblended Stuccos

The choice is **CLEAR:**

**C**onsistency

**L**abor reduction

**E**nhanced productivity

**A**STM - pretested to ASTM specifications

**R**educe waste and risk to the contractor



Amerimix offers a wide range of stucco mixes that include an ICC approved base coat that may be used in conjunction with continuous foam insulation (CI) and fire rated wall systems. Our stuccos are preblended using strict quality control procedures for batch-to-batch consistency every time. Amerimix stuccos offer superior adhesion and reduced shrinkage for a beautiful, lasting finish. The Amerimix line of stucco products are engineered for use over a variety of substrates and projects requiring code compliant base coats and finishes, high volume pump applications and water resistant wall systems.

### Features & Benefits

- Outstanding workability, enhances productivity
- Consistent proportioning, maximizing strengths and yields
- Eliminates sand piles, reducing costs and penalties associated with jobsite cleanup and storm water mitigation
- Available in 80 lb bags, or 3000 lb bulk bags for use with the Amerimix silo delivery systems



## Scratch, Brown & Finish Stucco - AMX 700 SBF

Amerimix AMX 700 SBF Scratch, Brown & Finish Stucco is a portland based, factory blend of sand, cement and proprietary chemical additives. AMX 700 may be used for a variety of wall assemblies. The aggregates and mix design for AMX 700 are specifically formulated to meet the requirements of two and three coat applications over solid plaster bases (unit masonry, precast/cast-in-place concrete) per Table 4 of ASTM 926.

### Features

- Outstanding workability for smooth spreading and a quality finish
- Extended mortar board life for less retempering in hot or windy climates
- Superior adhesion

### Uses

- Interior or exterior applications
- Stucco scratch, brown and finish coats
- Two and three coat system applications
- Application over lath

### Specifications

- ASTM C 91 Standard Specification for Masonry Cement
- ASTM C 150 Standard Specification for Portland Cement
- ASTM C 207 Standard Specification for Hydrated Lime for Masonry Purposes
- ASTM C 926 Standard Specification for Application of Portland Based Plaster
- ASTM C 1328 Standard Specification for Plaster (Stucco) Cement



## Premium Plus Stucco - AMX 715 PP

Amerimix AMX 715 PP is a portland based, factory blend of sand, cement and proprietary chemical additives. AMX 715 PP is a hand applied or pump grade cement plaster for all ASTM 926 cement plaster applications. It is specifically formulated to allow maximum flow for use with mechanical pumps without the addition of extra water - reducing the incidence of shrinkage cracks associated with pump mixes.

### Features

- Retains more moisture during curing for reduced cracking and efflorescence and improved finishing
- Pumpable for high volume jobs
- High bondability and strength
- Repels more moisture than traditional stuccos when fully cured
- Cures harder than conventional stucco

### Uses

- Ideal for high-volume applications or where water resistance is needed
- In applications where greater adhesion is needed
- For scratch, brown and finish coat work
- Anywhere conventional stucco is used

### Specifications

- ASTM C 91 Standard Specification for Masonry Cement
- ASTM C 150 Standard Specification for Portland Cement
- ASTM C 926 Standard Specification for Application of Portland Based Plaster
- ASTM C 1328 Standard Specification for Plaster (Stucco) Cement





## Fiber Scratch & Brown Stucco - AMX 740 FSB

AMX 740 FSB is a factory blended, fibered, pump grade portland/lime cement plaster for conventional scratch and brown stucco applications. It is specifically formulated to allow maximum flow for use with mechanical pumps without the addition of extra water – reducing the incidence of shrinkage cracks associated with pump mixes.

### Features

- Fire rated per IBC assemblies
- Higher flexural strength, greater impact resistance
- Scratch & brown over steel or wood framing

### Uses

- Interior or exterior applications
- Scratch and brown stucco coats
- Can be used in residential, commercial, and institutional/government projects

### Specifications

- ASTM C 150 Standard Specification for Portland Cement
- ASTM C 207 Standard Specification for Hydrated Lime for Masonry Purposes
- ASTM C 926 Standard Specification for Application of Portland Based Plaster



## Fiber Base Coat Stucco - AMX 750 FBC

AMX 750 FBC is a portland/lime cement plaster blended with pozzolan, durable synthetic fibers and proprietary chemical additives. It is designed to be used in general stucco and ICC rated systems. AMX 750 FBC is a one-hour rated assembly when built according to ICC instructions; and may be used for insulated and non-insulated one coat systems and conventional scratch and brown applications. It is ideal for one coat, two coat and three coat applications between 80°F to 120°F.

### Features

- ICC approved for one hour rated fire assembly
- ICC listed portland/lime cement plaster
- 1" to 4" foam based insulation (CI) approved for AMX 750 assemblies
- Hot, dry, weather applications
- One hour fire rated per ASTM E 119

### Uses

- For use as a one coat or two coat stucco
- Basecoat in a two coat process
- Fast track projects
- Where labor savings is desired

### Specifications

- ICC ESR - 3529
- ASTM E 119 Standard Test Methods for Fire Tests of Building Construction and Materials
- ASTM C 150 Standard Specification for Portland Cement
- ASTM C 207 Standard Specification for Hydrated Lime for Masonry
- ASTM C 926 Standard Specification for Application of Portland Based Plaster



## Fiber Base Coat Concentrate Stucco - AMX 755 FBCC

AMX 755 FBCC is a factory blend of cement, pozzolan, durable synthetic fibers, and proprietary chemical additives. It is designed to be used in general stucco and ICC rated systems. AMX 755 FBCC is a one hour rated assembly when built according to ICC instructions – and may be used for insulated and non-insulated one coat systems and conventional scratch and brown applications.

### Features

- Conforms to all requirements of ICC approval under report ESR-3529 for one coat stucco, including a one hour fire rating
- Higher water retentivity than standard mixes
- Reduced cracking and shrinkage

### Uses

- One-coat stucco application
- Scratch and brown stucco assemblies
- Application over wood or steel framing, solid substrates, masonry, and continuous insulation

### Specifications

- ICC ESR - 3529
- ASTM E 119 Standard Test Methods for Fire Tests of Building Construction and Materials
- ASTM C 150 Standard Specification for Portland Cement
- ASTM C 207 Standard Specification for Hydrated Lime for Masonry
- ASTM C 926 Standard Specification for Application of Portland Based Plaster



## Colored Stucco - AMX 775 C

Amerimix Colored Stucco - AMX 775 C is a colored, decorative, water resistant, portland/lime based stucco. It is factory blended to provide a uniform color finish. The pigments are finely milled and specially mixed to ensure proper dispersion throughout the batch. Amerimix offers 20 standard colors. Conforms to ASTM C 926. "Available in Eastern U.S. only"

### Features

- Durable
- Water resistant
- Superior workability
- Factory blended for color consistency

### Uses

- As a decorative finish coat over:
- Cement plaster
  - Masonry block
  - Precast concrete
  - Cast in place concrete

### Specifications

- ASTM C 150 Standard Specification for Portland Cement
- ASTM C 207 Standard Specification for Hydrated Lime for Masonry
- ASTM C 926 Standard Specification for Application of Portland Cement Based Plaster



## Stucco Texture Finish - AMX 780 T

Amerimix Stucco Texture Finish AMX 780 T is a decorative, water resistant, portland-based topcoat for one, two or three coat stucco systems. AMX 780 T is factory blended to provide excellent workability and a variety of textured finishes that can be painted with coatings designed for high pH surfaces.

### Features

- Paintable
- Durable
- Superior workability

### Uses

- A decorative, portland cement top coat for one, two, or three coat stucco systems
- When used as the third coat in a conventional stucco system, AMX 780 T is an integral component of a number of fire-rated assemblies

### Specifications

- ASTM C 91 Standard Specification for Masonry Cement
- ASTM C 150 Standard Specification for Portland Cement
- ASTM C 207 Standard Specification for Hydrated Lime for Masonry
- ASTM C 926 Standard Specification for Application of Portland Cement Based Plaster
- ASTM C 1328 Standard Specification for Plaster (Stucco) Cement



## Stucco Sand Finish - AMX 790 SSF

Amerimix Stucco Sand Texture Finish AMX 790 SSF is a decorative, portland-based topcoat for one, two or three coat stucco systems. AMX 790 SSF is a factory blend designed to provide a 'sand' or 'floated' finish that can be painted with coatings designed for high pH surfaces.

### Features

- Paintable
- Factory mixed for consistent textures
- Durable
- Superior workability

### Uses

- One-Coat stucco
- Scratch, brown and finish coats
- Precast concrete

### Specifications

- ASTM C 91 Standard Specification for Masonry Cement
- ASTM C 150 Standard Specification for Portland Cement
- ASTM C 207 Standard Specification for Hydrated Lime for Masonry
- ASTM C 926 Standard Specification for Application of Portland Cement Based Plaster
- ASTM C 1328 Standard Specification for Plaster (Stucco) Cement







# P R O D U C T   G U I D E



8201 Arrowridge Blvd.  
Charlotte, NC 28273  
PH: 888-313-0755  
amerimix.com

Amerimix® is a registered trademark of an Oldcastle company.

RainBloc® and RainBloc GP® are registered trademarks of ACM Chemistries. RainBloc GP US Patent No. 8,747,550.

© Copyright 2015 Oldcastle. All Rights Reserved. REV 09/15